



ARMSTRONG
METALWORKS®
MESH

Inspiring Great Spaces®

Armstrong®
CEILING SOLUTIONS



MESH BY DESIGN

Contemporary, Sophisticated and Industrial designs are easily achieved with METALWORKS® Mesh. Select from Lay In or Hook On ceiling panel options and bring your floating cloud or full ceiling design concept to life.

METALWORKS® Mesh Colours



Global White



Silver Grey



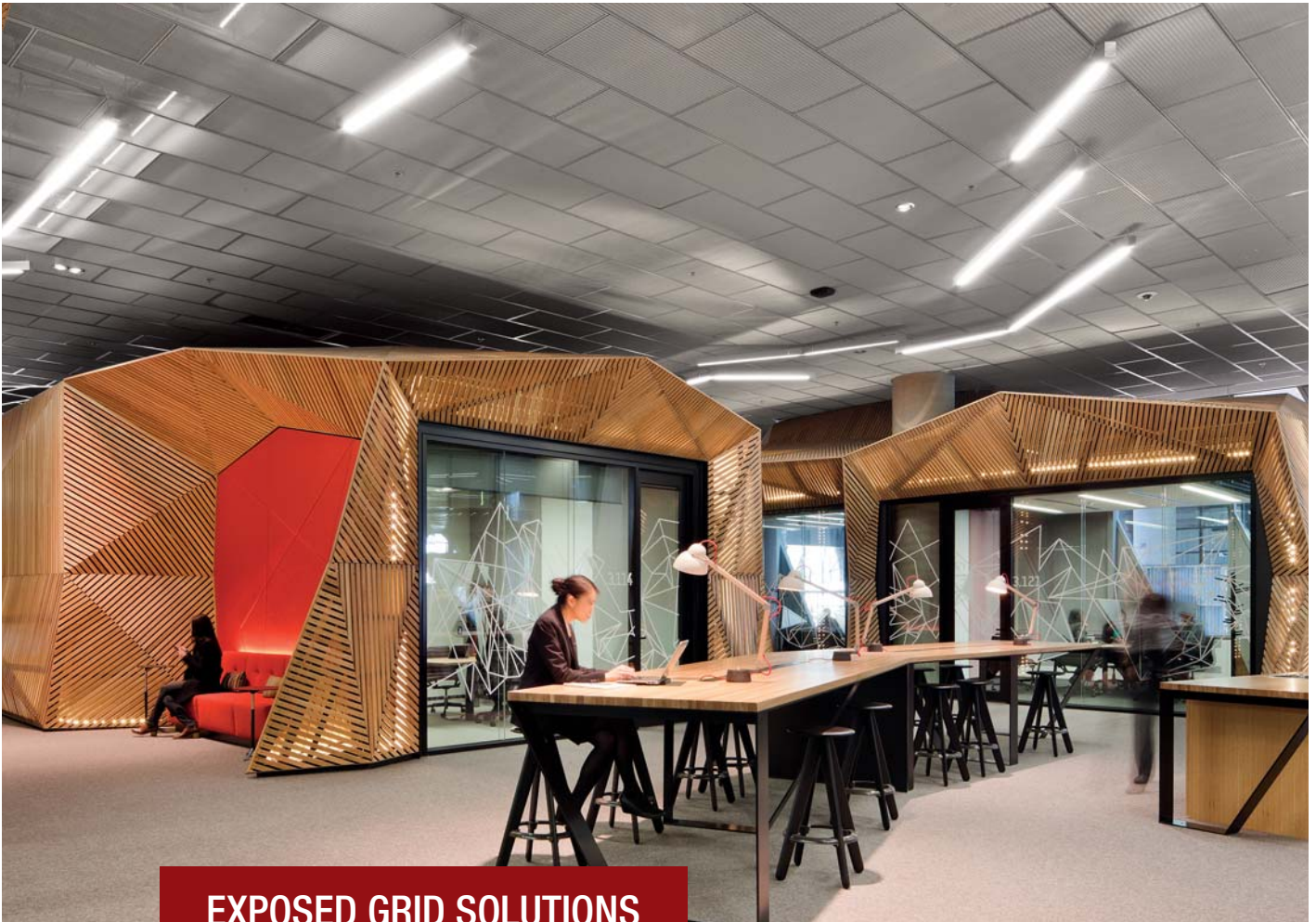
Black



Custom colours
available upon
request

Image shown: 900 Ann Street, Brisbane

Image on Front cover: QUT in Brisbane



EXPOSED GRID SOLUTIONS

Project: NAB Bank Victoria, METALWORKS Mesh Hexagon 3


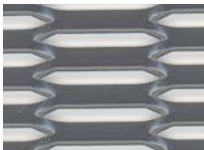

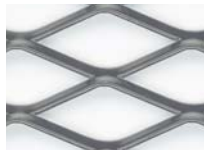
METALWORKS® MESH LAY IN

Expanded Mesh				
Grid / panel	Hexagon 1	Hexagon 3	Rhombic 4	Rhombic 7
	<p>7.2mm x 26.4mm</p> <p>BP5316M6A1_* - 600x600mm BP5319M6A1_* - 1200x600mm Open Area 74% Weight 5.0kg/m²</p>	<p>3.75mm x 26.4mm</p> <p>BP5332M6A1_* - 600x600mm BP5321M6A1_* - 1200x600mm Open Area 80% Weight 7.1kg/m²</p>	<p>11mm x 25.9mm</p> <p>BP5336M6A1_* - 600x600mm BP5325M6A1_* - 1200x600mm Open Area 78% Weight 4.2kg/m²</p>	<p>12.6mm x 30.5mm</p> <p>BP5333M6A1_* - 600x600mm BP5331M6A1_* - 1200x600mm Open Area 84% Weight 4.2kg/m²</p>
Welded and Woven Mesh				
Grid / panel	Welded – Small Square	Welded – Big Square	Woven – Square Wire	Woven – Linear Wire
	<p>25.6mm</p> <p>MMWE1CS_* - 600x600mm MMWE1CM_* - 1200x600mm Open Area 78% Weight 4.3kg/m²</p>	<p>59.4mm</p> <p>MMWE2CS_* - 600x600mm MMWE2CM_* - 1200x600mm Open Area 88% Weight 2.3kg/m²</p>	<p>19.5mm 6.4mm</p> <p>MMWOFNS_* - 600x600mm Open Area 53% Weight 4.0kg/m²</p>	<p>10mm 19.5mm</p> <p>MMWOTNS_* - 600x600mm MMWOTNM_* - 1200x600mm Open Area 62% Weight 6.5kg/m²</p>
Notes: * When specifying or ordering, include the appropriate 2-letter colour suffix with the item number (e.g., BP5316M6A1WH) WH = White, SG = Silver, BL = Black Some items are available based on a minimum order quantity. Other sizes available upon request. Contact your Armstrong Representative for more information.				

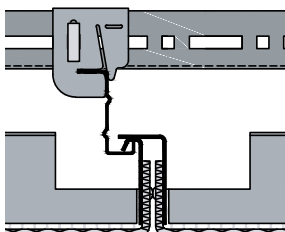


Above Project: Stanley Black & Decker: Warsaw, Poland

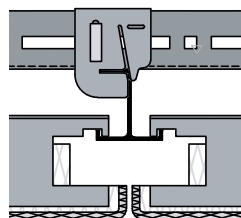
METALWORKS MESH R-H200 AND R-H215 HOOK ON

Expanded Mesh					
Edge Detail	Panel Size	Hexagon 1	Hexagon 3	Rhombic 4	Rhombic 7
					
RH-200	600x600 1200x300 1200x600	MEH1R001_* MEH1R002_* MEH1R003_*	MEH3R001_* MEH3R002_* MEH3R003_*	MER4R001_* MER4R002_* MER4R003_*	MER7R001_* MER7R002_* MER7R003_*
RH-215	600x600 1200x300 1200x600	MEH1R151_* MEH1R152_* MEH1R153_*	MEH3R151_* MEH3R152_* MEH3R153_*	MER4R151_* MER4R152_* MER4R153_*	MER7R151_* MER7R152_* MER7R153_*
Notes: * When specifying or ordering, include the appropriate 2-letter colour suffix with the item number (e.g., MER4R003WH) WH = White, SG = Silver, BL = Black Some items are available based on a minimum order quantity. Other sizes available upon request. Contact your Armstrong Representative for more information.					

R-H200 Mesh



R-H215 Mesh



R-H200 and R-H215 Hook On Mesh are downward demountable, concealed grid systems that provide a monolithic visual.

A minimum ceiling height of 2700mm is recommended for Mesh Hook On Systems.

Contact your Armstrong Technical Representative to determine the best Hook On Mesh System for your project.



Image: Australia Post, Melbourne

SPECIFICATION



Humidity Resistance RH99%



Conforms with BCA Spec. C1.10 and tested to AS/NZS 3837:1998 – Group 1, ISO 5660 – Group 1–S

Specification:

Lay In Mesh

Armstrong METALWORKS® Mesh “Lay In” Ceiling Panels for Exposed 24mm Grid System (either Prelude XL steel or Blue Tongue Aluminium). Colour to match panel or specification.

Hook On Mesh

Armstrong METALWORKS® Mesh “RH-200 or RH-215 Hook-On” Ceiling Panels for Concealed Grid, consisting of U-Profile Primary Channels with either J-Bar or H-Bar Support Rails.

Material:

Galvanised Steel

Surface Finish:

Powdercoated Satin White or Black, with custom colours available

Module Sizes:

As per specification

System Weight:

Varies based on pattern and module. See also Mesh panel weights on page 3

Service Integration:

Refer to Installation Guide

Acoustic Infill:

As per specification

APPLICATION AREAS

METALWORKS MESH Ceilings are versatile and can be applied in a broad range of applications

- Hospitality
- Offices
- Foyers
- Retail
- Transport
- Education



BENEFITS

- Contemporary design aesthetic
- Available in Lay In for 24mm exposed Tee Grid and Hook On Concealed Grid options
- Simple accessibility
- Wide range of designs, sizes, colours
- Custom solutions available
- Durable: Impact resistant

ACOUSTICAL INFILL SOLUTIONS AVAILABLE

Combine stunning aesthetics with great acoustics via a range of optional infills. Please contact your local representative for further information.



Image: AJ & Co Lawyers, showcasing black mesh

CONTACT

Armstrong World Industries Pty Ltd

NSW/ACT

Armstrong World Industries Pty. Ltd.
Unit 4, 1 Basalt Road, Pemulwuy NSW 2145
Telephone (02) 9748 1588
Facsimile (02) 9748 7244

VIC/TAS

Armstrong World Industries Pty. Ltd.
Unit 1, 88 Henderson Road, Rowville VIC 3178
Telephone (03) 8706 4000
Facsimile (03) 8706 4040

QLD/NT

Armstrong World Industries Pty. Ltd.
6 Barrinia Street, Slacks Creek QLD 4127
Telephone (07) 3809 5565
Facsimile (07) 3809 5507

SA

Total Building Systems Pty. Ltd.
160 Grand Junction Road, Blair Athol SA 5084
Telephone (08) 7325 7555
Facsimile (08) 7325 7566

WA

Ceiling Manufacturers of Australia Pty. Ltd.
5 Irvine Street, Bayswater WA 6053
Telephone (08) 9271 0777
Facsimile (08) 9272 2801

New Zealand

Forman Building Systems Ltd.
20 Vestey Drive, Mount Wellington, Auckland 1060
Telephone +64 (9) 276 4000
Facsimile +64 (9) 276 414



green building council australia
MEMBER 2017-2018



www.armstrongceilings.com.au
Email: scentre@armstrongceilings.com

AWP0519 Printed on Zanders Mega Recycled paper

Inspiring Great Spaces® is a trademark of AFI Licensing LLC. All other trademarks are property of AWI Licensing LLC and/or affiliates and registered in the U.S. and/or other countries. © 2019 AWI Licensing LLC.

Inspiring Great Spaces®

Armstrong®
CEILING SOLUTIONS